

# Geared 6" Vertical Spindle Attachment

## Geared Vertical Spindle

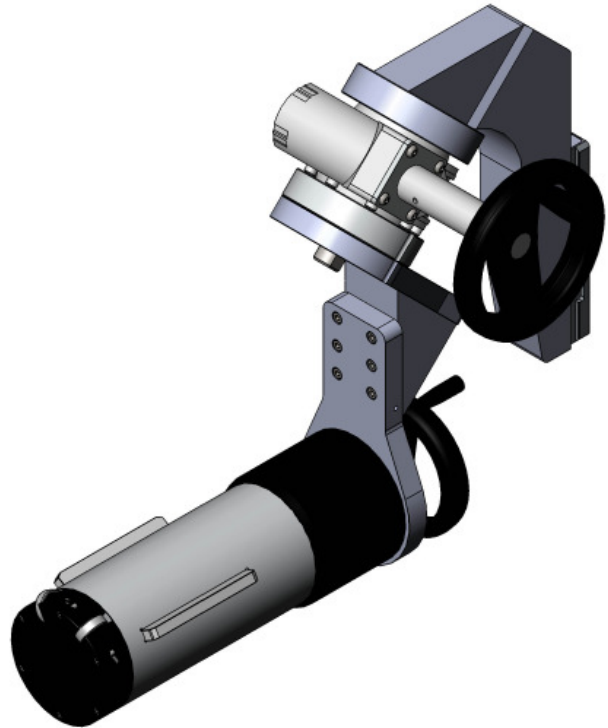
Used to lift and rotate reels of film by gripping reel's core the Vertical Spindle is available in a wide range of sizes and configurations as standard and capable of lifting loads up to 225kg depending on model

For applications outside of the standard range the company provides a full bespoke design service offering solutions for most applications

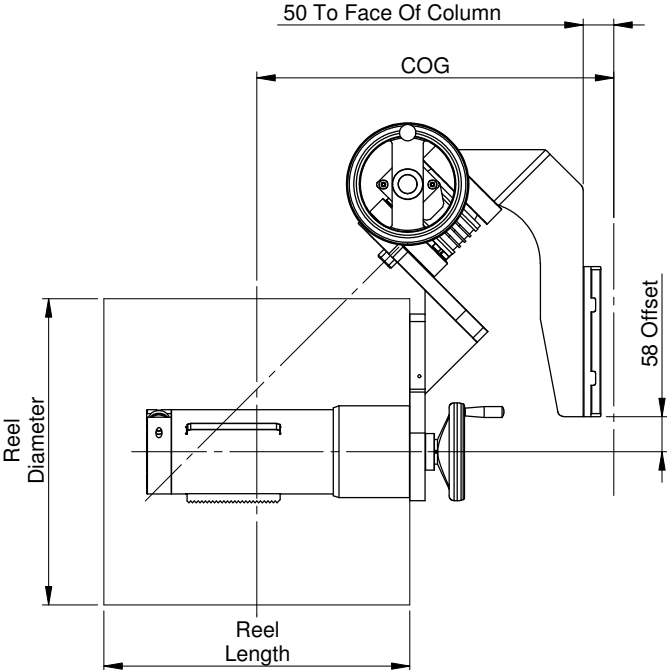
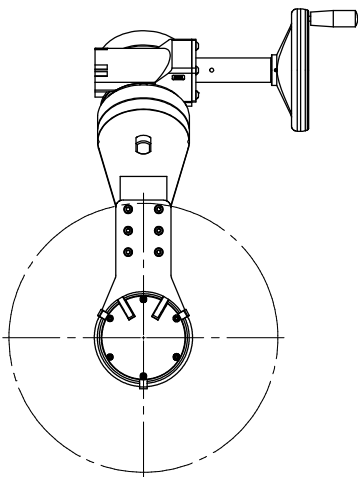
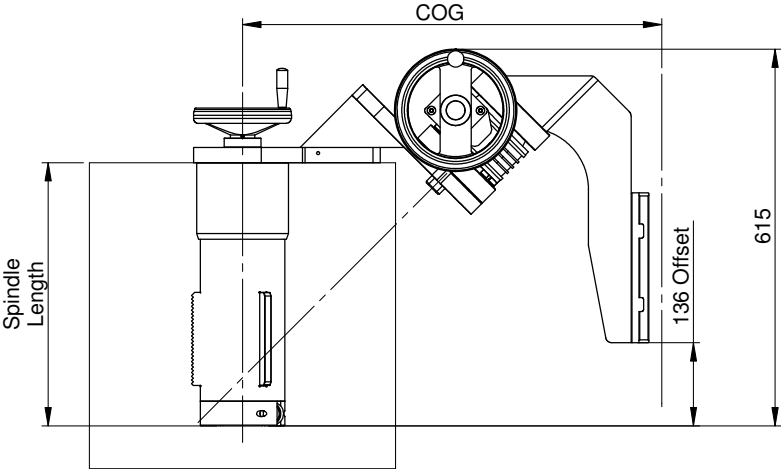
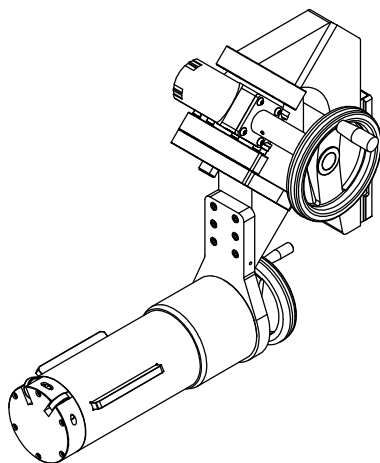
Packline's full range of attachments are fully interchangeable and can be easily fixed or removed from any model of Compac fitted with the unique quick release system

### Overview:-

- Available as Gearbox Rotation
- Load capacity up to 225kg (495lbs)
- Suitable for reel core diameters of 152mm (6") as standard
- Built in Torque limiter to ensure correct gripping pressure is applied to the reel's core optional
- Constructed mainly from anodised Aluminium, Stainless Steel, Brass and Acetal making it suitable for hygienic and clean room applications
- Fitted with expanding serrated jaws to provide maximum grip and cater for core



# Geared 6" Vertical Spindle Attachment



	Description	Max. SWL	Load Centre	Max. SWL On Compac Model:		Mass
				C150	C300	
VS4507-18	152/400/TL/MR	225kg	685mm	90kg	225kg	39kg

Refer to reel selection chart for appropriate reel sizes for use with individual designs

# Specification Sheet for Min/Max Lift Height Of Vertical Spindles

Horizontal	Min. Height		Max. Height	
	C150	C300	C150	C300
50C	114mm	178mm	1601mm	1584mm
100C	165mm	229mm	1652mm	1635mm
85P	108mm	172mm	1595mm	1578mm
85RPW	108mm	172mm	1595mm	1578mm

Vertical	Min. Height		Max. Height	
	C150	C300	C150	C300
50C	35mm	99mm	1530mm	1505mm
100C	86mm	150mm	1581mm	1556mm
85P	30mm	94mm	1517mm	1500mm
85RPW	30mm	94mm	1517mm	1500mm

These lift heights are based on the Vertical Spindles being used with a standard 2000mm (2mtr) tall Compac lifter. Taller and shorter lifters are available in increments of +/- 100mm.

